

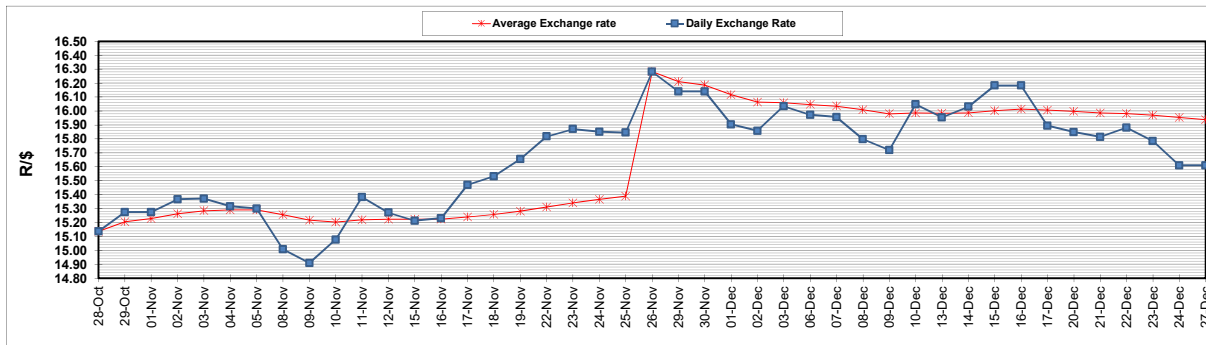
| | PETROL 95 ULP | PETROL 93 ULP & LRP | DIESEL 0.05% | DIESEL 0.005% | ILL. PAR. |
|--|------------------|------------------------|-----------------|------------------|-----------|
| GAUTENG PUMP PRICE (SA c/l) AS FROM 01/12/2021 | 2,029.000 | 2,007.000 | - | - | - |
| WHOLESALE PRICE (SA c/l) AS FROM 01/12/2021 | - | - | 1,792.480 | 1,797.880 | 1,167.688 |
| SINGLE NATIONAL MAXIMUM RETAIL PRICE | - | - | - | - | 1,489.000 |
| BASIC FUEL PRICE - 27/12/2021 (SA c/l) | 916.057 | 903.327 | 882.187 | 885.082 | 871.693 |
| PRESS RELEASE CONTRIBUTION TO BFP 01/12/2021 - 27/12/2021 (SA c/l) | 973.670 | 961.670 | 955.630 | 961.030 | 946.128 |
| UNIT OVER/(UNDER) RECOVERY - 27/12/2021 (SA c/l) | 57.613 | 58.343 | 73.443 | 75.948 | 74.435 |
| AVERAGE BASIC FUEL PRICE 26/11/2021 - 27/12/2021 | 892.941 | 877.774 | 874.894 | 878.493 | 866.188 |
| AVERAGE UNIT OVER/(UNDER) RECOVERY 26/11/2021 - 27/12/2021 | 75.743 | 78.910 | 75.554 | 77.083 | 75.304 |

ANALYSIS MOVEMENT OF AVERAGE OVER/(UNDER) RECOVERY

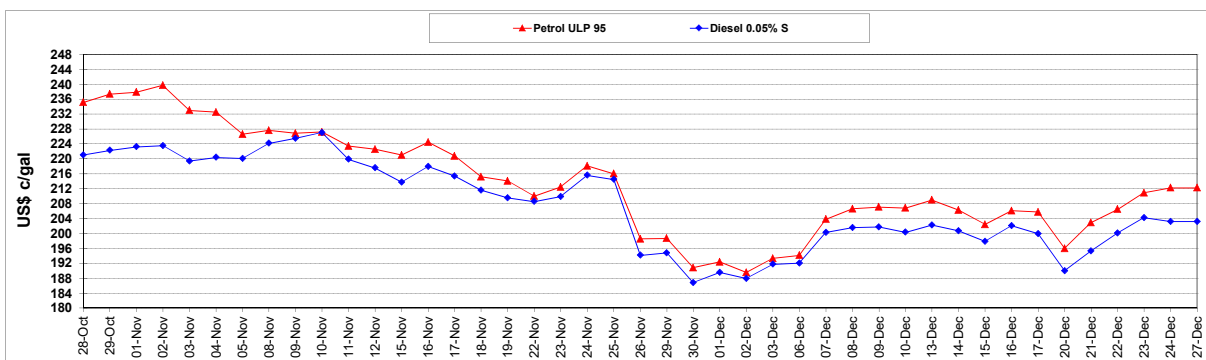
| | PETROL 95 | PETROL 93 | DIESEL 0.05% | DIESEL 0.005% | ILL. PAR. |
|--|-----------|-----------|--------------|---------------|-----------|
| - MOVEMENT IN INTERNATIONAL PRODUCT PRICES | 106.507 | 109.152 | 105.696 | 107.348 | 105.146 |
| - MOVEMENT IN EXCHANGE RATE | (30.763) | (30.241) | (30.142) | (30.266) | (29.842) |
| AVERAGE UNIT OVER/(UNDER) RECOVERY 26/11/2021 - 27/12/2021 | 75.743 | 78.910 | 75.554 | 77.083 | 75.304 |

R/\$ EXCHANGE RATE - (R/\$15.6100 - 27/12/2021)

EXCHANGE RATE USED IN BASIC FUEL PRICE



INTERNATIONAL PRODUCT PRICES OF BASKET USED IN BASIC FUEL PRICE



BASIC FUEL PRICE IN SA CENTS PER LITRE

